



Fly Legacy

JULY 2024
Newsletter by
Gene Nicolo



Welcome to Our New Flight Instructor

Tom Ringe

My road to become a pilot started ten years ago when a friend took me flying in his airplane and inspired me to start flight training. The fascination for aviation has always existed, but it wasn't until I moved to America that I got the opportunity to make this a dream become a reality. As pilots, we never stop learning, and this is also the reason why I wanted to become an instructor.

Thus far, this journey has been such a rewarding experience. I have had some amazing mentors, met some great people, and I always look forward to meeting other pilots and making new friends. I am very grateful for this opportunity and excited to be around such a great group of people here at Legacy. I'm excited to take advantage of this chance to grow and learn, to share some of my experiences, and maybe to be able to inspire the next generation of pilots.

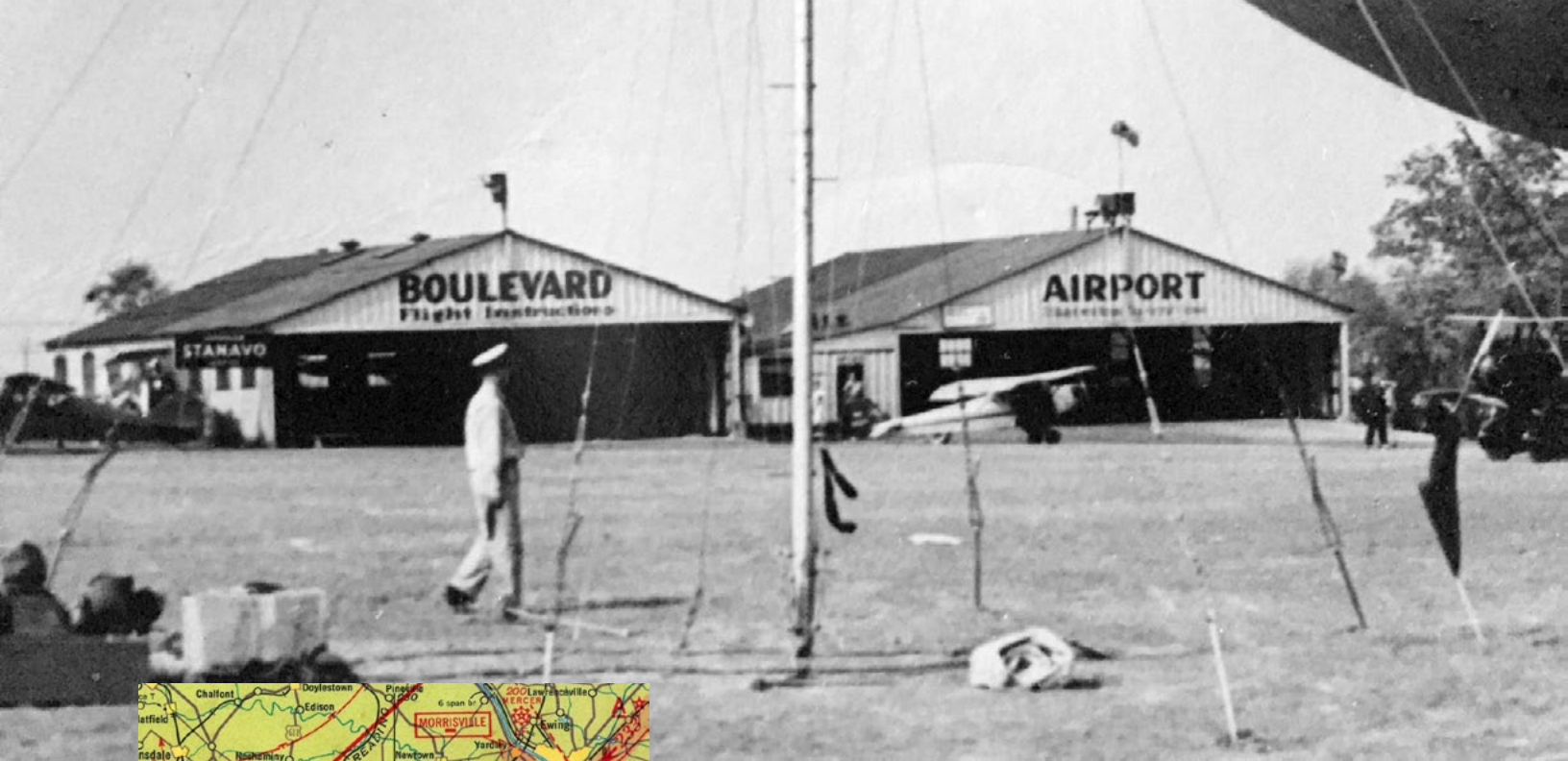


PHOTO OF THE MONTH

Boulevard Airport

Boulevard Airport, also called William Penn Airport, was located across the street from Northeast Philadelphia airport. You can also see on the 1940 chart the number of airports that were around at the time. Located at Red Lion Road & Roosevelt Boulevard it was operated by the Interstate Flying Corporation. The 80-acre field had 2 runways & 2 hangars situated next to Roosevelt Boulevard. It had 6 all-metal, modern planes available for daily use. There was a small restaurant across Red Lion Road that provided food & beverages for visitors.

GENE'S AVIATION QUIZ

- 1 What causes wind gusts?
- 2 When do wind gusts usually begin?
- 3 When are low level winds most uniform?
- 4 When are temperature inversions most prominent?
- 5 Which cools more rapidly? The Dry Adiabatic Rate or the Moist Adiabatic Rate.
- 6 Why is moist air less dense than dry air?

Our Trusted Partners: Meritize and Stratus Financial

Learn more about
affordable financing at
[flylegacyaviation.com/
financing](http://flylegacyaviation.com/financing)

Check Rides



Natanim Abebe

Private Pilot

Instructor: A. Abdelmoteleb



Eric Aubrey

Private Pilot

Instructor: A. Abdelmoteleb



Matt Carver

Commercial Pilot

Instructor: Dan Silva



Kiran Shazadi

CFI

Instructor: Cheryl Benish

Patrick Williams

CFII

Instructor: Jim Zararis

Greg Hill

Commercial Pilot

Instructor: Jim Zararis

Dan Velanti

Multi Engine

Instructor: Kornel Pesti

Ian Ramdeen

Instrument Rating

Instructor: R. Rodriguez

Matt Wisecarver

CFI

Instructor: Cheryl Benish

Jude Langhlin

Private Pilot

Instructor: Dan Silva

Hansen Wilson

Private Pilot

Instructor: D. Montanaro

Will Welch

CFII

Instructor: Jim Zararis

Ryan Lin

Instrument Rating

Instructor: Cheryl Benish

Gregory Ortiz

Private Pilot

Instructor: Alex Faiman

Nazariy Danylyshyn

Multi Engine

Instructor: Kornel Pesti

Gregg Darnley

Private Pilot

Instructor: Cheryl Benish

DID YOU KNOW?

The first woman to fly faster than Mach 1 was **Jacqueline Cochran**. Cochran was born in 1906 and became one of the pioneering women of aeronautics. She was a friend of Chuck Yeager, who first broke the sound barrier in 1947. He helped her to make the transition to jet-powered aircraft and on May 18, 1953, she flew an F-86 Sabre past Mach 1 becoming the first woman to break the sound barrier. She went on to set a world speed record of 1,429 mph in 1964. She still holds more distance and speed records than any pilot living or dead, male or female.



First Solos



Derek Hornung

Instructor:

Caleb Roop



Hannah Choi

Instructor:

Nazariy Danylyshyn



Benjamin Urschel

Instructor:

Nazariy Danylyshyn



Stephanie Vitt

Instructor:

Petro Pitula

George Francis

Instructor: Vince Innamarato

GENE'S QUIZ ANSWERS

① Gusts are often created as wind brushes past buildings, trees, or other obstacles, with the friction causing the air to slow and then speed up again. ② Surface wind gusts usually begin in the late morning hours, peak in the afternoon, and end by early evening. ③ At night and in the predawn hours. ④ During the night. As the Earth cools a shallow, stable layer develops near the ground, resulting in an inversion. ⑤ The Dry Adiabatic Rate. ⑥ Moist air has more water vapor which as 2 Hydrogen atoms. Water molecules displace the heavier Nitrogen and Oxygen in favor of Hydrogen which is much lighter and less dense.

QUOTE OF THE MONTH

"If you push the stick forward, the houses get bigger. If you pull the stick back, they get smaller. That is, unless you keep pulling the stick all the way back, then they get bigger again."

**Learn
to Fly
Program**

[flylegacyaviation.com/
camp](http://flylegacyaviation.com/camp)

215-969-0311

9800 Ashton Road, Philadelphia, PA 19114

www.flylegacyaviation.com



Fly Legacy